

PRODUCTS > UNIONS - HAMMER HAMMER UNION



Figure 100

Size:

Threaded 2" - 8"

Forged Steel 2" - 3"

Ductile Iron 4" - 8"

Non-Shock Cold Working Pressure Ratings (PSI)

Standard Service

CWP

1000

Test

1500

H2S Service

CWP

-

Test

-



Figure 200

Sizes Available: 1" - 10"

Features: Threaded, BW SCH 40 & 80, Socket Weld, Cast or Forged Steel

Non-Shock Cold Working Pressure Ratings (PSI)

Standard Service

CWP

2000

Test

3000

H2S Service

CWP

2000

Test

3000

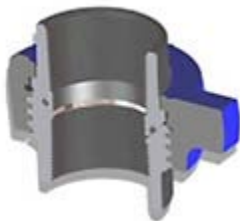


Figure 206

Sizes Available: 1" - 10" O'Ring

Features: Threaded, BW SCH 40 & 80, Cast or Forged Steel

Non-Shock Cold Working Pressure Ratings (PSI)

Standard Service

CWP

2000

Test

3000

H2S Service

CWP

2000

Test

3000

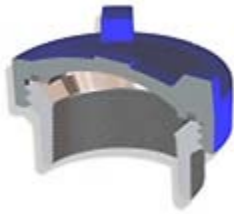


Figure 207

Sizes Available: 3" & 4"

Features: Threaded, BW SCH 40 & 80, Cast or Forged Steel

Non-Shock Cold Working Pressure Ratings (PSI)

Standard Service		H2S Service	
CWP	Test	CWP	Test
2000	3000	2000	3000

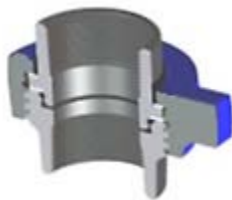


Figure 211

Sizes Available: 2" & 3"

Features: Threaded, Insulating Union, Cast or Forged Steel

Non-Shock Cold Working Pressure Ratings (PSI)

Standard Service		H2S Service	
CWP	Test	CWP	Test
2000	3000	-	-



Figure 300

Sizes Available: 2"

Features: Threaded, Flat Face, Forged Steel

Non-Shock Cold Working Pressure Ratings (PSI)

Standard Service		H2S Service	
CWP	Test	CWP	Test
2000	3000	-	-



Figure 301

Sizes Available: 2"

Features: Threaded, Socket weld, Forged Steel

Non-Shock Cold Working Pressure Ratings (PSI)

Standard Service

CWP	Test	H2S Service CWP	Test
3000	4500	-	-



Figure 400

Figure 402 Seal Ring Design

Size: 2", 3", 4", 12"

Features: Threaded, BW SCH 80, Forged Steel

Non-Shock Cold Working Pressure Ratings (PSI)

Standard Service

CWP	Test	H2S Service CWP	Test
4000	6000	4000	6000



Figure CGC

Size: 1 1/2" & 2"

Features: Threaded, Forged Alloy Steel

Non-Shock Cold Working Pressure Ratings (PSI)

Standard Service

CWP	Test	H2S Service CWP	Test
6000	9000	6000	9000



Figure 602

Size: 1" - 4"

Features: Threaded, BW SCH 80, 160, XXH, forged alloy

Non-Shock Cold Working Pressure Ratings (PSI)

Standard Service

CWP

6000

Test

9000

H2S Service

CWP

6000

Test

9000

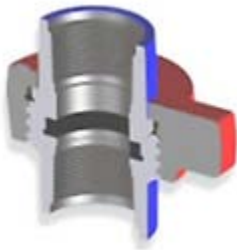


Figure 1002

Size: 1" - 6"

Features: Threaded, BW SCH 160, XXH, forged alloy

Non-Shock Cold Working Pressure Ratings (PSI)

Standard Service

CWP

10000

Test

15000

H2S Service

CWP

7500

Test

12000



Figure 1003

Size: 3", 4", 5" Misaligning Union

Features: Threaded, BW SCH 160, XXH, forged alloy

Non-Shock Cold Working Pressure Ratings (PSI)

Standard Service

CWP

10000

Test

12000

H2S Service

CWP

5000

Test

7500

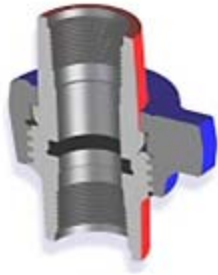


Figure 1502

Size: 1" - 4"

Features: Threaded, BW SCH 160, XXH, forged alloy

Non-Shock Cold Working Pressure Ratings (PSI)

Standard Service

CWP
15000

Test
22500

H2S Service

CWP
10000

Test
15000