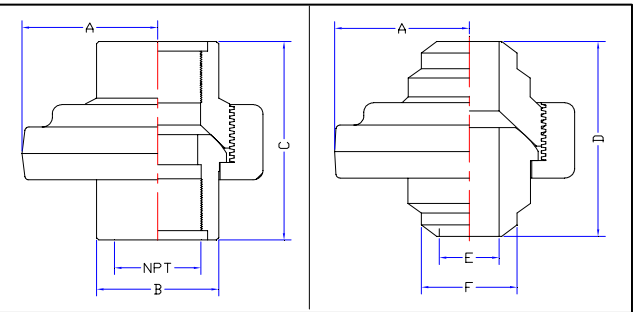


TABLE FOR BUTT WELD INSIDE DIAMETER.(I.D.)										
SIZE	1"	1 1/2"	2"	2 1/2"	3"	4"	5"	6"	8"	12"
ID SCH 40	1.049	---	2.067	2.469	3.068	4.026	5.047	6.065	7.981	---
ID SCH 80	0.957	1.500	1.939	2.323	2.900	3.826	4.813	5.761	7.625	11.376
ID SCH 120	---	---	---	---	---	3.624	4.563	5.501	7.187	---
ID SCH 160	0.815	---	1.687	2.125	2.624	3.438	4.313	5.187	6.813	---
ID SCH XXH	0.559	---	1.500	1.771	2.300	3.152	4.063	4.897	6.875	---
ID SCH XXXH	---	---	1.250	1.375	---	---	---	---	---	---

FIGURE 100

NOMINAL PIPE SIZE	MM(In)	2"	2 1/2 "	3"	4"	5"	6"	8"
A Clearance radius	mm(In)	2.96	3.81	4.34	4.50	5.51	6.39	8.30
B Out side diameter	mm(In)	2.78	3.31	4.08	5.21	6.31	7.50	9.63
C End to end threaded	mm(In)	3.35	4.24	4.96	5.81	6.55	6.54	7.17
D End to end butt-weld	mm(In)	3.75	---	5.97	4.85	6.23	---	---
E Inside diameter XXH	mm(In)	SEE TABLE FOR BUTT WELD I.D.						
F Pipe outer diameter	mm(In)	2.38	---	3.50	4.50	5.56	5.56	---
ACME thread per inch.		3 modified	3 modified	3 modified	3 modified	3 standard	3 standard	3 standard
Weight (Kg)THD		2.70	5.60	8.40	10.39	22.20	22.20	37.50
Weight (Kg)SCH-80		3.02						
Material		A 105	A 105	A 105	A 105	A 105	A 105	A 105



THREADED

BUT WELD

FIGURE 200 and 206

NOMINAL PIPE SIZE	MM(In)	1	1 1/4"	1 1/2"	2"	2 1/2"	3"	4"	5"	6"	8"	10"
A Clearance radius	mm(In)	1.89	2.31	2.31	2.99	3.81	4.01	4.50	5.77	6.39	8.30	9.01
B Out side diameter	mm(In)	1.59	2.00	2.25	2.78	3.38	4.12	5.12	6.38	7.50	9.63	11.5
C End to end threaded	mm(In)	2.67	2.77	2.79	3.27	4.13	4.56	4.95	6.00	6.54	7.17	9.06
D End to end butt-weld	mm(In)	2.67	---	2.79	3.65	4.13	6.06	4.99	6.03	6.66	7.17	9.04
E Inside diameter XXH	mm(In)	SEE TABLE FOR BUTT WELD I.D.										
F Pipe outer diameter	mm(In)	1.37	---	1.90	2.38	2.88	3.50	4.51	5.56	6.63	8.63	10.75
ACME thread per inch.		6 standard	6 standard	6 standard	4 standard	4 standard	4 standard	3 modified	4 standard	3 standard	3 standard	3 standard
Weight (Kg)THD		0.87	1.35	1.27	1.93	5.60	8.15	9.19	21.47	21.47	35.79	39.75
Material		A 105	A 105	A 105	A 105	A 105	A 105	A 105	A 105	A 105	A 105	A 105

FIGURE 207

NOMINAL PIPE SIZE	MM(In)	3"	4"	6"	8"	10"
A Clearance radius	mm(In)	2.85	3.51	4.92	---	---
B Out side diameter	mm(In)	---	---	---	---	---
C End to end threaded	mm(In)	---	---	---	---	---

D End to end butt-weld	mm(In)	4.68	4.59	5.64	---	---
E Inside diameter XXH	mm(In)	SEE TABLE FOR BUTT WELD I.D.				
F Pipe outer diameter	mm(In)	3.50	4.51	6.63	---	---
ACME thread per inch.		4 standard	3 modified	3 standard	---	---
Weight (Kg)THD		5.07	8.63	---	---	---
Material		A-105	A-105	A-105	A-105	A-105

FIGURE 300

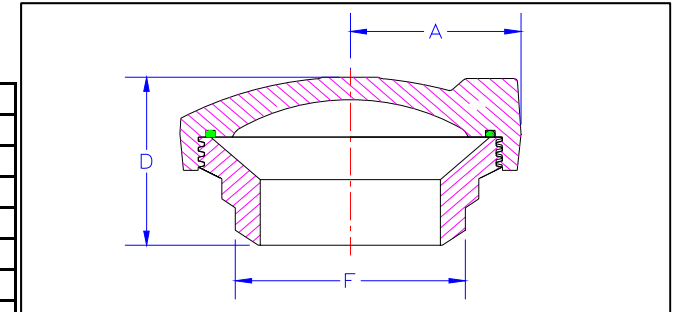
NOMINAL PIPE SIZE	MM(In)	1"	2"3000tp	2"6000tp	4"	6"	8"	10"
A Clearance radius	mm(In)	2.18	2.95	3.46	---	---	---	---
B Out side diameter	mm(In)	1.80	2.88	2.88	---	---	---	---
C End to end threaded	mm(In)	2.55	3.58	5.34	---	---	---	---
D End to end butt-weld	mm(In)	---	5.53	---	---	---	---	---
E Inside diameter XXH	mm(In)	SEE TABLE FOR BUTT WELD I.D.						
F Pipe outer diameter	mm(In)	---	2.40	---	---	---	---	---
ACME thread per inch.		8 stub	4 standard	4 standard	---	---	---	---
Weight (Kg)THD		---	4.80	---	---	---	---	---
Weight (Kg)SCH-160			5.45					
Material		A-105	A-105	A-105	A-105	A-105	A-105	A-105

FIGURE 301

NOMINAL PIPE SIZE	MM(In)	1"	2"	2"	4"	6"	2"	10"
A Clearance radius	mm(In)	---	2.86	---	---	---	---	---
B Out side diameter	mm(In)	---	2.83	---	---	---	---	---
C End to end threaded	mm(In)	---	3.66	---	---	---	---	---
D End to end butt-weld	mm(In)	---	---	---	---	---	---	---
E Inside diameter XXH	mm(In)	SEE TABLE FOR BUTT WELD I.D.						
F Pipe outer diameter	mm(In)	---	---	---	---	---	---	---
ACME thread per inch.		---	4 standard	---	---	---	---	---
Weight (Kg)THD		---	---	---	---	---	---	---
Weight (Kg)SCH-160			---				---	
Material		A-105	A-105	A-105	A-105	A-105	A-105	A-105

FIGURE 400

NOMINAL PIPE SIZE	MM(In)	2"	3"	4"	5"	6"	8"	10"	12"
A Clearance radius	mm(In)	3.84	4.36	4.72	5.50	6.63	7.60	9.38	10.81
B Out side diameter	mm(In)	3.00	4.25	5.26	6.25	7.75	9.69	11.88	14.00
C End to end threaded	mm(In)	5.23	6.15	8.26	10.51	11.14	11.41	10.61	11.07
D End to end butt-weld	mm(In)	---	---	7.94	10.51	---	---	---	11.00



E Inside diameter XXH	mm(In)	SEE TABLE FOR BUTT WELD I.D.							
F Pipe outer diameter	mm(In)	---	---	4.50	5.56	---	---	---	12.75
ACME thread per inch.		3 Standard	3 Standard	3 Standard	3 Standard	3 Standard	3 Standard	3 Standard	3 Standard
Weight (Kg)THD		5.00	9.58	13.39	21.80	36.37	47.03	58.05	75.59
Weight (Kg)SCH-XXH				16.40					
Material		A 105	A 105	A 105	A 105	A 105	4130	A-487	A-487

FIGURE 602

NOMINAL PIPE SIZE	MM(In)	1"	1 1/4"	1 1/2"	2"	2 1/2"	3"	4"
A Clearance radius	mm(In)	2.20	---	3.33	3.84	---	4.74	5.31
B Out side diameter	mm(In)	1.75	---	2.55	3.06	---	4.30	5.30
C End to end threaded	mm(In)	3.56	---	4.87	5.28	---	6.27	8.22
D End to end butt-weld	mm(In)	3.56	---	4.87	5.18	---	5.70	5.91
E Inside diameter XXH	mm(In)	SEE TABLE FOR BUTT WELD I.D.						
F Pipe outer diameter	mm(In)	1.32	---	1.90	2.40	---	3.50	4.50
ACME thread per inch.		6 Standard	---	4 Standard	3 stub	---	3 stub	3 stub
Weight (Kg)THD		1.78	---	4.91	6.53	---	12.17	15.28
Weight (Kg)SCH-80							11.79	13.55
Weight (Kg)SCH-160					6.97		12.39	14.665
Weight (Kg)SCH-XXH		1.82			7.13		12.96	15.25
Material		AISI 4130	AISI 4130	AISI 4130	AISI 4130	AISI 4130	AISI 4130	AISI 4130

FIGURE 607

NOMINAL PIPE SIZE	MM(In)	1"	1 1/4"	1 1/2" AG	2"	2" AG	3"	4"
A Clearance radius	mm(In)	---	---	2.84	3.35	3.32	---	---
B Out side diameter	mm(In)	---	---	2.53	3.11	2.96	---	---
C End to end threaded	mm(In)	---	---	4.14	5.87	5.84	---	---
D End to end butt-weld	mm(In)	---	---	---	5.43	---	---	---
E Inside diameter XXH	mm(In)	SEE TABLE FOR BUTT WELD I.D.						
F Pipe outer diameter	mm(In)	---	---	---	2.40	---	---	---
ACME thread per inch.		---	---	5 Standard	3 standard	3 standard	---	---
Weight (Kg)THD		---	---	---	6.86	---	---	---
Weight (Kg)SCH-160					7.44			
Material		AISI 4130	AISI 4130	AISI 4130	AISI 4130	AISI 4130	AISI 4130	AISI 4130

FIGURE 1002

NOMINAL PIPE SIZE	MM(In)	1"	1 1/4"	1 1/2"	2"	2 1/2"	3"	4"	5"	6"
A Clearance radius	mm(In)	2.20	---	---	3.84	---	4.78	5.31	6.39	6.56
B Out side diameter	mm(In)	1.75	---	---	3.06	---	4.25	5.30	6.50	---

C End to end threaded	mm(In)	3.56	---	---	5.28	---	6.26	8.15	7.76	---
D End to end butt-weld	mm(In)	3.56	---	---	5.18	---	5.70	5.54	6.10	6.51
E Inside diameter XXH	mm(In)	SEE TABLE FOR BUTT WELD I.D.								
F Pipe outer diameter	mm(In)	1.32	---	---	2.40	---	3.50	4.50	5.56	6.75
ACME thread per inch.		6 Standard	---	---	3 stub	---	4 standard	4 standard	3 standard	3 standard
Weight (Kg)THD		1.77	---	---	6.52	---	12.30	15.30	29.20	---
Weight (Kg)SCH-XXH							12.81	15.17	30.08	37.465
Material		AISI 4130	AISI 4130	AISI 4130	AISI 4130	AISI 4130	AISI 4130	AISI 4130	AISI 4130	AISI 4130

FIGURE 1003

NOMINAL PIPE SIZE	MM(In)	2"	3"	4"	5"
A Clearance radius	mm(In)	---	5.01	5.90	5.90
B Out side diameter	mm(In)	---	---	5.56	---
C End to end threaded	mm(In)	---	---	10.94	---
D End to end butt-weld	mm(In)	---	9.17	10.94	10.94
E Inside diameter XXH	mm(In)	SEE TABLE FOR BUTT WELD I.D.			
F Pipe outer diameter	mm(In)	---	3.51	4.50	5.56
ACME thread per inch.		---	4 standard	4 standard	4 standard
Weight (Kg)THD		---	---	33.72	33.85
Weight (Kg)SCH-XXH				33.43	34.54
Material		AISI 4130	AISI 4130	AISI 4130	AISI 4130

FIGURE 1004

NOMINAL PIPE SIZE	MM(In)	5"	6"							
A Clearance radius	mm(In)	5.90	7.25							
B Out side diameter	mm(In)	---	---							
C End to end threaded	mm(In)	---	---							
D End to end butt-weld	mm(In)	8.27	9.38							
E Inside diameter XXH	mm(In)	SEE TABLE FOR BUTT WELD I.D.								
F Pipe outer diameter	mm(In)	5.56	6.63							
ACME thread per inch.		3 standard	3 standard							
Material										
Weight (Kg)SCH-XXH		---	---							
Weight (Kg)THD		---	---							

FIGURE 1502

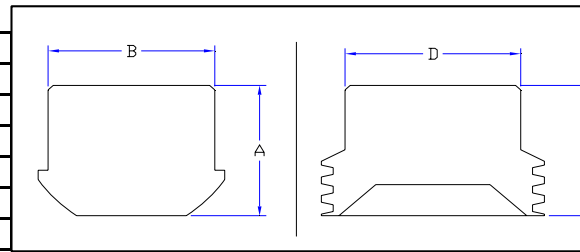
NOMINAL PIPE SIZE	MM(In)	1"	1 1/4"	1 1/2"	2"	2 1/2"	3"	4"	5"	6"
A Clearance radius	mm(In)	2.74	---	3.36	3.94	3.96	4.56	5.70	6.06	7.23
B Out side diameter	mm(In)	2.19	---	2.96	3.25	3.75	4.55	5.50	---	---

D End to end butt-weld	mm(In)	---	---	---	---	---	---	---	---
E Inside diameter XXH	mm(In)	SEE TABLE FOR BUTT WELD I.D.							
F Pipe outer diameter	mm(In)	---	---	---	---	---	---	---	---
ACME thread per inch.		---	---	---	---	---	---	---	3 Modi 1
Material		A105	A105	A105	A105	A105	A105	A105	A105
Weight (Kg)THD		---	---	---	---	---	---	---	11.87

MALE & FEMALE BLIND

FIGURE 50

NOMINAL SIZE	Inch	1"	2"	3"	4"	5"
Male- A Total height	Inch	---	---	---	---	2.09
B Outer Dia	Inch	---	---	---	---	6.02
Female-C Total height	Inch	---	---	---	---	2.68
D Outer Dia	Inch	---	---	---	---	6.00
Material		A105	A105	A105	A105	A105
Weight (Kg)THD		---	---	---	---	---



MALE BLIND

FEMALE BLIND

FIGURE 100

NOMINAL SIZE	Inch	1"	2"	3"	4"	5"	6"
Male- A Total height	Inch	---	2.14	2.37	2.52	2.53	2.66
B Outer Dia	Inch	---	2.88	4.08	5.21	6.31	7.50
Female-C Total height	Inch	---	2.50	2.64	2.91	2.79	2.88
D Outer Dia	Inch	---	2.80	4.10	5.22	6.40	7.41
Material		A105	A105	A105	A105	A105	A105
Weight (Kg)THD		---	---	---	---	---	---

FIGURE 200

NOMINAL SIZE	Inch	1"	1 1/4"	1 1/2"	2"	2 1/2"	3"	4"	5"	6"	8"	10"
Male- A Total height	Inch	1.97	1.97	1.97	2.12	2.16	2.38	2.45	2.62	2.66	2.83	2.86
B Outer Dia	Inch	1.59	2.00	2.25	2.89	3.38	4.20	5.22	6.25	7.5	9.63	11.5
Female-C Total height	Inch	2.09	2.11	2.12	2.39	2.48	2.64	2.73	2.72	2.89	3.48	3.08
D Outer Dia	Inch	1.59	2.00	2.25	2.87	3.38	4.20	5.22	6.37	7.41	8.63	11.5
Material		A105	A105	A105	A105	A105	A105	A105	A105	A105	A105	A105
Weight (Kg)THD		---	---	---	---	---	---	---	---	---	---	---

FIGURE 206

NOMINAL SIZE	Inch	1"	1 1/4"	1 1/2"	2"	2 1/2"	3"	4"	5"	6"	8"	10"
--------------	------	----	--------	--------	----	--------	----	----	----	----	----	-----

Male- A Total hieght	Inch	1.97	---	1.97	2.12	2.16	2.38	2.45	2.62	2.66	2.80	2.86
B Outer Dia	Inch	1.59	---	2.25	2.89	3.38	4.20	5.22	6.25	7.5	9.64	11.5
Female-C Total hieght	Inch	---	---	---	---	---	---	---	---	---	---	---
D Outer Dia	Inch	---	---	---	---	---	---	---	---	---	---	---
Material		A105	A105	A105	A105	A105	A105	A105	A105	A105	A105	A105
Weight (Kg)THD		---	---	---	---	---	---	---	---	---	---	---

FIGURE 400

NOMINAL SIZE	Inch	1"	2"	3"	4"	5"	6"	8"
Male- A Total hieght	Inch	---	---	---	2.50	---	---	---
B Outer Dia	Inch	---	---	---	5.31	---	---	---
Female-C Total hieght	Inch	---	---	---	3.17	---	---	---
D Outer Dia	Inch	---	---	---	5.26	---	---	---
Material		A105	A105	A105	A105	A105	A105	A105
Weight (Kg)THD		---	---	---	---	---	---	---

FIGURE 602

NOMINAL SIZE	Inch	1"	1 1/4"	1 1/2"	2"	3"	4"	6"
Male- A Total hieght	Inch	1.75	---	2.49	2.75	3.00	3.02	---
B Outer Dia	Inch	1.77	---	2.55	3.06	4.30	5.31	---
Female-C Total hieght	Inch	2.00	---	2.62	2.78	3.05	3.26	---
D Outer Dia	Inch	1.77	---	2.64	3.05	4.30	5.31	---
Material		AISI 4130	AISI 4130	AISI 4130	AISI 4130	AISI 4130	AISI 4130	AISI 4130
Weight (Kg)THD		---	---	---	---	---	---	---

FIGURE 1002

NOMINAL SIZE	Inch	1"	1 1/2"	2"	3"	4"	5"	6"
Male- A Total hieght	Inch	---	---	2.75	3.00	2.86	3.53	3.63
B Outer Dia	Inch	---	---	3.06	4.25	5.28	6.44	7.75
Female-C Total hieght	Inch	---	---	2.83	3.05	3.11	3.47	3.58
D Outer Dia	Inch	---	---	3.06	4.25	5.28	6.44	6.75
Material		AISI 4130	AISI 4130	AISI 4130	AISI 4130	AISI 4130	AISI 4130	AISI 4130
Weight (Kg)THD		---	---	---	---	---	---	---

FIGURE 1003

NOMINAL SIZE	Inch	1"	1 1/2"	2"	3"	4"	5"	6"
Male- A Total hieght	Inch	---	---	---	---	7.25	---	---
B Outer Dia	Inch	---	---	---	---	5.56	---	---

Female-C Total hieght	Inch	---	---	---	---	4.54	---	---
D Outer Dia	Inch	---	---	---	---	5.56	---	---
Material		AISI 4130	AISI 4130	AISI 4130	AISI 4130	AISI 4130	AISI 4130	AISI 4130
Weight (Kg)THD		---	---	---	---	---	---	---

FIGURE 1004

NOMINAL SIZE	Inch	1"	1 1/2"	2"	3"	4"	5"	6"
Male- A Total hieght	Inch	---	---	---	---	---	---	5.38
B Outer Dia	Inch	---	---	---	---	---	---	7.73
Female-C Total hieght	Inch	---	---	---	---	---	---	4.50
D Outer Dia	Inch	---	---	---	---	---	---	7.75
Material		AISI 4130	AISI 4130	AISI 4130	AISI 4130	AISI 4130	AISI 4130	AISI 4130
Weight (Kg)THD		---	---	---	---	---	---	---

FIGURE 1502

NOMINAL SIZE	Inch	1"	1 1/2"	2"	2 1/2"	3"	4"	5"	6"
Male- A Total hieght	Inch	2.26	2.88	3.44	3.75	2.63	4.56	5.00	5.50
B Outer Dia	Inch	2.19	2.97	3.25	3.75	4.50	5.63	6.52	7.75
Female-C Total hieght	Inch	2.40	2.88	3.16	3.75	2.87	4.50	4.50	4.75
D Outer Dia	Inch	2.19	2.97	3.25	3.75	3.50	5.63	6.52	7.75
Material		AISI 4130	AISI 4130	AISI 4130	AISI 4130	AISI 4130	AISI 4130	AISI 4130	AISI 4130
Weight (Kg)THD		---	---	---	---	---	---	---	---

FIGURE 2202

NOMINAL SIZE	Inch	1"	2"	3"	4"	5"
Male- A Total hieght	Inch	---	3.88	6.50	---	---
B Outer Dia	Inch	---	2.59	5.38	---	---
Female-C Total hieght	Inch	---	3.88	6.50	---	---
D Outer Dia	Inch	---	2.59	5.25	---	---
Material		AISI 4130	AISI 4130	AISI 4130	AISI 4130	AISI 4130
Weight (Kg)THD		---	---	---	---	---